



EAA12P-B PARALLEL AUTOSWITCH

SETUP GUIDE

1. FOR 2 PC ⇒ 1 PRINTER OPERATION

Software installation not required!

Note: Users can override auto scan by moving the switch to A or B.

2. FOR 1 PC ⇒ 2 PRINTERS OPERATION

Move switch 1 (refer to Figure 1) all the way to the left.

Note: Make sure switch 2 is set to AUTO to use software controlled switching.

Users can manually switch without software by moving the switch to A or B.

2A. INSTALLING DOS SOFTWARE (DOS 5 OR LATER)

1. Insert diskette into floppy drive
2. Change to "A" or "B" drive by:
Type "A:" **ENTER** for A drive
Type "B:" **ENTER** for B drive
3. Then type "INSTALL C:" **ENTER**
4. Type "C:" **ENTER** & remove the diskette
5. Modify the AUTOEXEC.BAT file:
 - Type "EDIT AUTOEXEC.BAT" **ENTER**
(Move the cursor to the bottom of the file)
 - Type "C:\AS\AS-2P 1" **ENTER**
 - Press **ALT + F, X, Y** to save the file.
6. Reboot the system

HOT KEY SELECTIONS

ALT + LEFT SHIFT + 1	Output to Port A
ALT + LEFT SHIFT + 2	Output to Port B
ALT + LEFT SHIFT + X	Broadcast to Output Ports**

**To use "Broadcast" mode with Windows or graphics printouts, both printers must be of the same make & model.

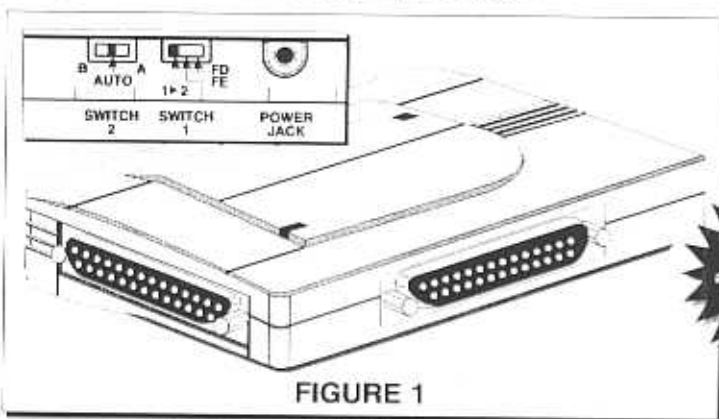


FIGURE 1

2B. INSTALLING WINDOWS 3.XX SOFTWARE

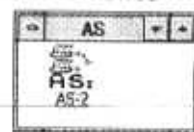
1. Insert diskette into floppy drive
2. From the File Manager, Select File Menu and Choose RUN
3. Type "A:\SETUP" **ENTER**

SELECTION OF PRINTERS

1. Double click on the "AS-2" icon
2. Click "PA" for Printer-1 or "PB" for Printer-2
3. Click on "OK" to activate selection
4. To broadcast (print to both printers)
 - Click on "BROADCAST", then click on "OK"

To customize printer names

- Click on "PRINTER1" box once, delete the name
- Type in the customized printer name
- Click on the circle by the box once



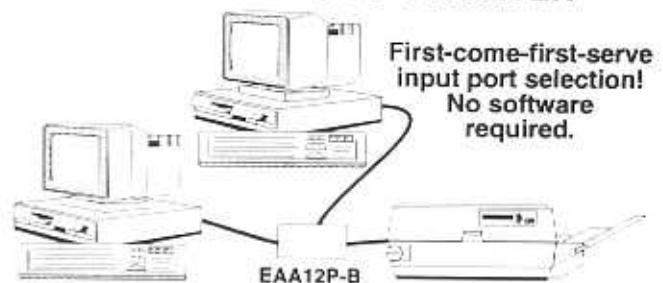
AS-Ware dialog box and program icon.

2C. INSTALLING WINDOWS 95 SOFTWARE

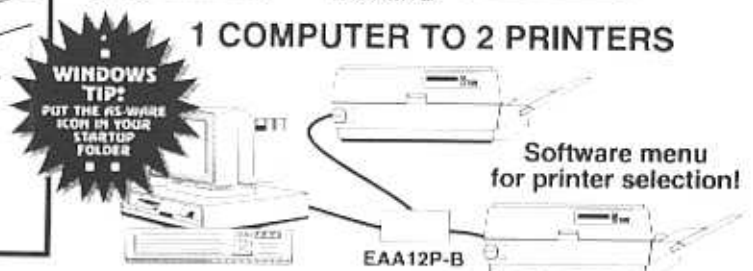
1. Insert diskette into floppy drive
2. From the Start Menu, Select File, and Choose RUN
3. Type "A:\SETUP" **ENTER**

INSTALLATION DIAGRAM

2 COMPUTERS TO 1 PRINTER



1 COMPUTER TO 2 PRINTERS



WINDOWS TIP:
PUT THE AS-WARE ICON IN YOUR STARTUP FOLDER