

TECHNICAL SPECIFICATIONS:

- Screen Resolutions 1024x768 (XGA) / 1280x768 (WXGA)
VGA 1024x768 (Default) / HDMI 720p
- Video Streaming Up to 30fps with Audio
Audio/Video Screen Mirroring (Windows Only)
- Network Connections Wi-Fi IEEE802.11b/g/n 2.4GHz
Fast Ethernet IEEE802.3 10/100Mbps
- Wireless Encryption WEP/WPA/WPA2 64Bit or 128Bit
- Wireless Antenna Detachable SMA (-3dBi)
- Wireless Range Up to 200ft*
- LAN Protocol TCP/IP
- LAN Type AP Mode, Hybrid (AP + LAN)
- IP Configuration Automatic or Manual (Static)
- OS Compatibility Windows XP, Vista, 7
Windows Mobile v5.xx and v6.xx
Apple Max OS X (10.4 or higher)

- Connectors RJ45 LAN, HD15 VGA, HDMI,
3.5mm Audio, SMA
- Power Supply AC Power Adaptor (included)
- Certification FCC, CE
- Warranty One Year

CONTENTS:

- Package Contents: airVGA with HDMI WPS
airVGA with HDMI USB Token
Quick Installation Guide
(2) Wireless Antenna
AC Power Adaptor

- USB Token Contents:
Client: Software for Windows, Windows Mobile & Mac
Applications: VAC (For Audio Projection)
VDD (For Virtual Extended Screen)
IB Make (For Changing Startup Screen)
PtG Converter (For MobileShow Ptg Function)
SNMP Manager (For WPS Device Management)

v.1

HDMI, the HDMI logo, and High-Definition Multimedia Interface

are trademarks or registered trademarks of HDMI Licensing LLC in the United States and other countries.

All names and trademarks are property of their respective companies. All information is subject to change without notice.

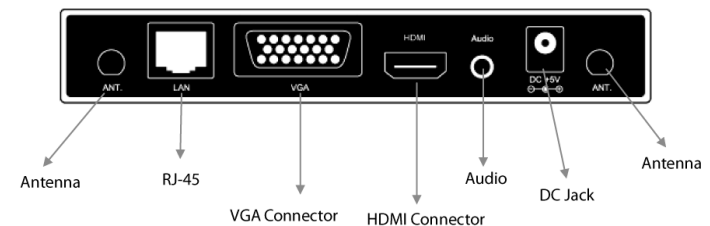
AIRVGA™
WIRELESS PRESENTATION SYSTEM

HDMI®
HIGH-DEFINITION MULTIMEDIA INTERFACE

Wireless Presentation System

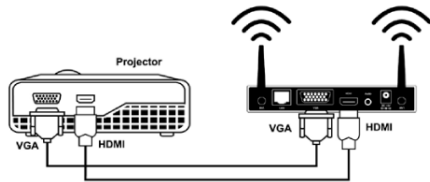
Quick Guide for Windows

(See detailed manual in the included USB Token for installation guide, softwares,
and Windows Mobile & Mac OS X support)



INSTALLATION

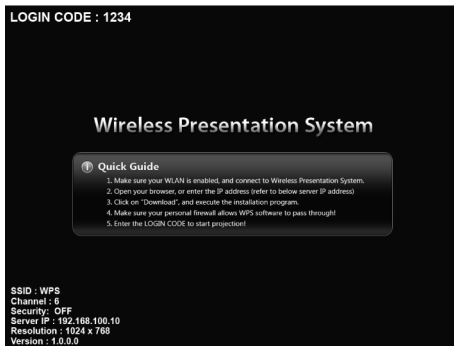
1. Assemble the airVGA with HDMI WPS by connecting its wireless antenna to the base-unit and its power adaptor to a power outlet. Connects AIRVGA to the projector's VGA port (or HDMI port). By default, the VGA port is active. To use the HDMI port, it must be change in the Projection Setup (see manual).



2. Make sure your computer's wireless connection is active.

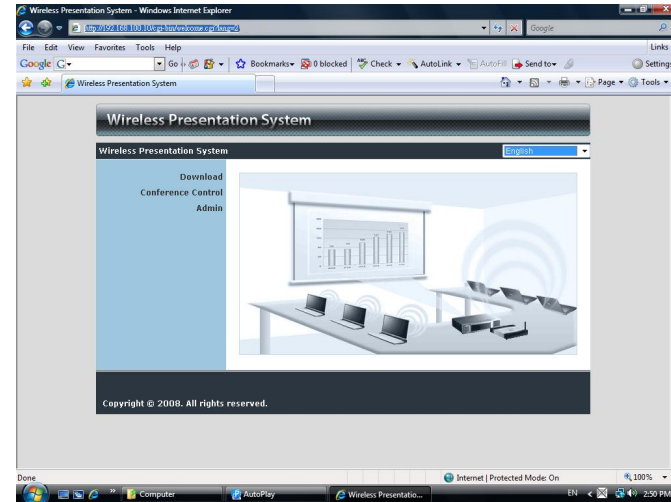


3. Turn-on the projector, then turn-on AIRVGA. Wait until you see the screen below on your projector.



From the projector's screen, note the 4-digit Log-in Code, SSID and Server IP address. You will need this information to install the player software.

4. Connect your computer to AIRVGA wireless network (SSID: WPS).
5. Open your Internet Explorer and type the Server IP shown on the screen (default is <http://192.168.100.10>) at the address bar and you'll see the screen below.



6. Click on "Download". Select the proper software for your computer operating system. Click on the "Download" and select "Run" at the prompt and follow the instruction to install the player software. A desktop icon will be created.
7. At your desktop, double-click on WPS desktop icon. The program will search the network and at the prompt, enter the 4 digit log-in code. (Note: If you have a 3rd party firewall software, make sure it allows WPS software to pass through)
8. Click "Play" to start sending your screen to the projector.



For more information on Windows, Windows Mobile and Apple/Mac support, please refer to the manual. Please visit our website for the latest setup guides/manual and firmware updates.